

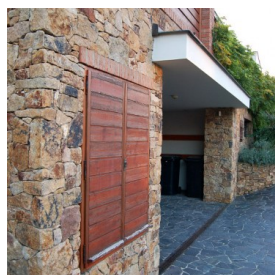
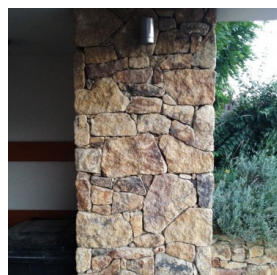


## Brown Velvet

**This material is suitable for projects, where you are interested in traditional rough look of stonemason work.** We mainly cultivate this stone to no-gap look. For realisation on thermal insulation system (ETICS) it is needed to use concrete base or steel brackets. In project proposal you should think about bigger frames of windows and doors because thickness of the stone.

Suitable for: stone facade, stone fence, stone wall, retention wall.

**Material price: 1 090 Kč/m<sup>2</sup>** (excluding VAT)



<b>Type</b>	Natural splitted stone for stonemason work
<b>Color</b>	Beige, gray, brown, pink
<b>Shape</b>	Rough stone
<b>Dimensions</b>	Format: 20x20 cm – 50x50 cm, thickness: 10-30 cm
<b>Weight</b>	Thickness 20 cm: max. 420 kg/m <sup>2</sup>
<b>Packing</b>	free laid
<b>Term of delivery</b>	1-4 weeks
<b>Frost resistance</b>	Yes
<b>Suitable for thermal insulation system</b>	Yes, concrete base