

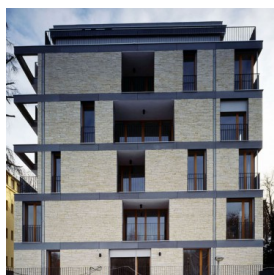
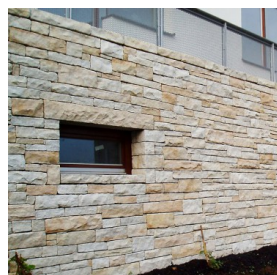


Kalahari

Beautiful and noble stone cladding with sandstone color. **With its lower weight it is suitable for bonding straight to thermal insulation system (ETICS) without concrete base.** It requires a few important rules. With Kalahari we work in horizontal lines with variable heights. There is option to supply corner pieces for more massive look of stone facade.

Suitable for: stone facade, cladding on exterior fence or interior wall.

Material price: 1 650 Kč/m² (excluding VAT)



Type	Natural splitted stone, one side cutted
Color	Beige, white
Shape	Rectangular natural strap
Dimensions	Length: 10-30 cm, thickness: 2-3 cm, height: 3-10 cm
Weight	Max. 70 kg/m ²
Packing	Pallets
Term of delivery	2-4 weeks
Frost resistance	Yes
Suitable for thermal insulation system	Yes, cement adhesive